

WS SERIES MARK SWITCH

Features

- The WS series Mark Sensors used the advanced E/O as well as double Side SMT technology, thus enable this series features
- Small sport size \ Dual light source \ Economic price.
- By using the GREEN as well as RED LED as light source simultaneously, the color discrimination capability is greatly enhanced.
- For economic purpose, the single color model is also introduced.



Specifications

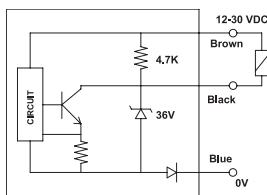
| Item | Standard |
|---------------------|---|
| Operating Voltage | 12-30 VDC |
| Sensing Distance | 8mm or 12mm, Selectable |
| Current Consumption | Less than 45mA |
| Power on Reset Time | 20ms |
| Response Time | 1ms 0.3ms for (H) |
| Circuit Protection | Output short circuit. Reverse polarity of supply voltage. |
| Max. Load Current | 120mA |
| Sealing | Conforming to IP66 (IEC). |
| Cable Length | 2 meter, oil retardant, gray color. |
| Wiring Diagram | Brown, black, white and blue as standard. Both Light-on and Dark-on Output included. |

Product Selection

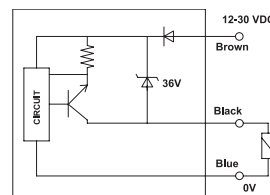
| | Light Source | Focus Length | Universal Output | PNP Output |
|--------------|--------------|--------------|------------------|------------|
| Dual Color | Red, Green | 12mm | WS-C2 (H) | WS-C4 |
| | Red, Green | 8mm | WS-C2A (H) | |
| Single Color | Green | 12mm | WS-C2G | |
| | White | 12mm | WS-C2W | WS-C4W |
| Dual Color | Blue, Yellow | 12mm | WS-CB2 (H) | WS-CB4 |

Output Circuit

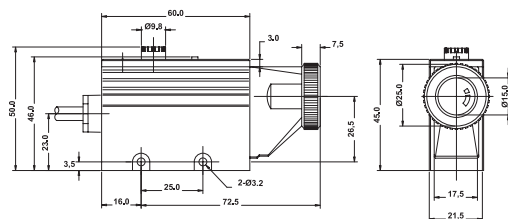
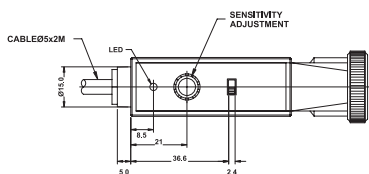
Universal Output



PNP Output



DIMENSIONS (in mm)



HIGHLY

D11

Design, specifications are subject to change without notice.